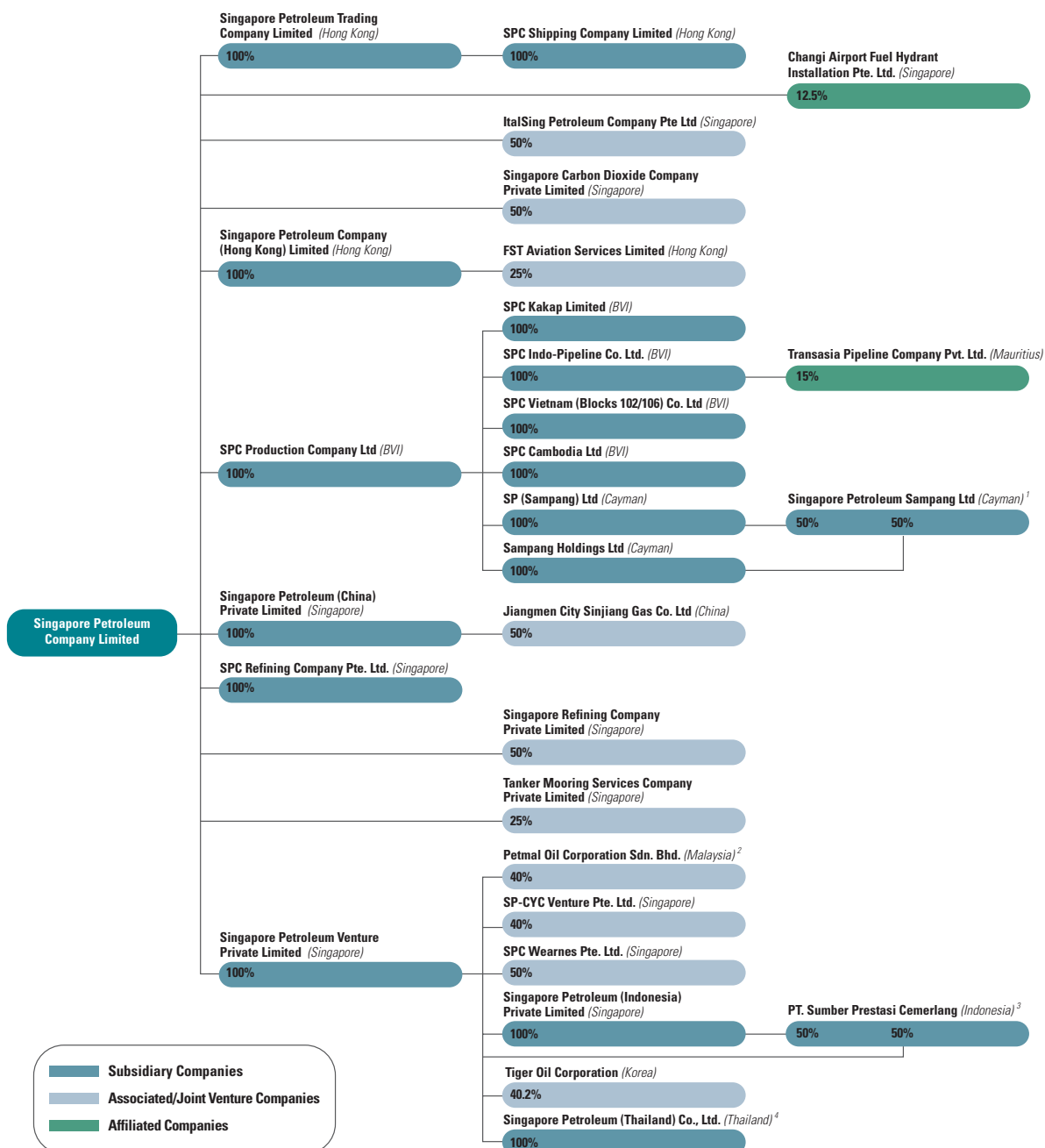


Corporate Structure



Notes :

- Singapore Petroleum Sampang Ltd (SPS) is a wholly owned subsidiary of SPC Production Company Ltd. SPC Production Company Ltd holds 100% in SPS through its two wholly owned Cayman Islands subsidiaries which each holds a 50% equity interest in SPS.
- Singapore Petroleum Venture Private Limited (SPV) had on 23 March 2005 terminated the joint venture agreement dated 2 August 1993 entered into with Petmal Oil (Malaysia) Sendirian Berhad in respect of Petmal Oil Corporation Sdn. Bhd.
- PT. Sumber Prestasi Cemerlang is a wholly owned subsidiary of SPV. SPV holds 50% directly and the remaining 50% is held by SPV's wholly owned subsidiary, Singapore Petroleum (Indonesia) Private Limited.
- Singapore Petroleum (Thailand) Co., Ltd. is a wholly owned subsidiary of SPV. SPV holds 99.98% directly and the remaining 0.02% indirectly through its six wholly owned British Virgin Islands subsidiaries namely Fullca Ltd., Glory Key International Limited, Orient Wise Group Limited, Prime Sea Limited, Straits Management Ltd. and Topwish Investments Ltd.